

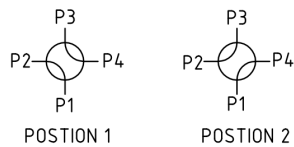
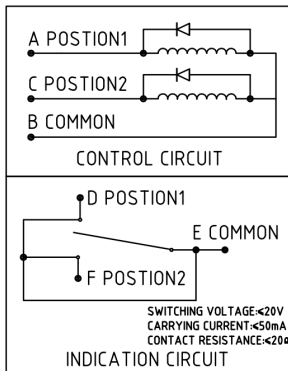
### Tech specifications

Parameters	Min	Typical	Max	Units
Frequency	26.5	~	40	GHz
IL		0.15		dB
Isolation	55			dB
VSWR		1.1		

### Other parameters

Switch way	DPDT
Switching characteristic	Mechanical reflective switch
Switch time	50ms
Connector	Waveguide
Waveguide port	BJ220
Working voltage	+28V
Working current	625mA
Operation Temp.	-40~+70°C Design assurance
Switching Lifetime	100000 Cycles

### Control circuit diagram

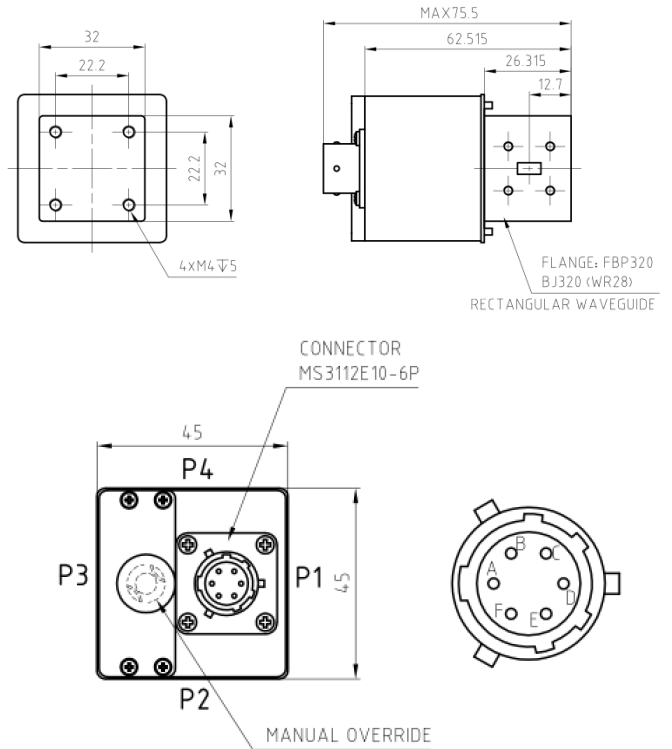


EXCITATION AND SWITCH STATUS
A VDC, B GND; D-E CONNECTED; POSITION 1
C VDC, B GND; F-E CONNECTED; POSITION 2

### Reference picture



### Configuration(mm)



### Note

1	Clean the surface of the product, do not soak the product in cleaning solution for cleaning.
2	If the temperature is higher than 125°C, consult with us before ordering.