

Tech specifications

Parameters	Min	Typical	Max	Units
Frequency	2	~	18	GHz
Gain	35			dB
Gain flatness		±2		dB
VSWR		1.8		
IP3	42			dBm
P-1dB		38		dBm
Psat		40		dBm

Environmental

Connector	SMA-K
Connector material	Stainless steel
Impedance	50Ω
Working voltage	+28V
Working current	2500mA
Operation Temp	-40~+60°C Design assurance
Quality Grade	Industrial grade

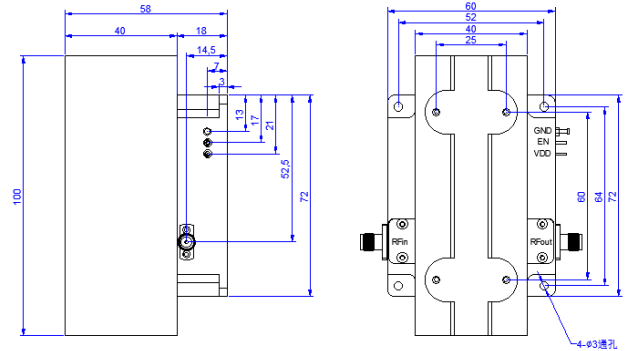
Typical test data

Frequency GHz	S11 VSWR	S22 VSWR	S12 gain dB	S12 P-1dB dBm	Psat dBm
1	1.26	3.58	37.85	35.31	36.48
2	1.11	1.92	40.03	39.02	40.2
3.5	1.15	1.71	41.72	38	41.06
5	1.11	1.19	42.34	38.4	41.5
6.5	1.13	1.39	43.73	38.8	40.8
8	1.16	1.43	41.53	39.2	40.7
9.5	1.15	1.47	40.09	38.3	40.2
11	1.37	1.63	40.93	38.52	40.6
12.5	1.32	1.25	41.43	38.8	40.1
14	1.32	1.19	42.4	36.4	40.1
15.5	1.5	1.45	42.04	37.25	40.2
17	1.8	1.45	40.59	38.9	40.7
18.5	2.43	1.76	35.91	36.8	38.2
20	1.84	2.35	28.47	26.7	31.1

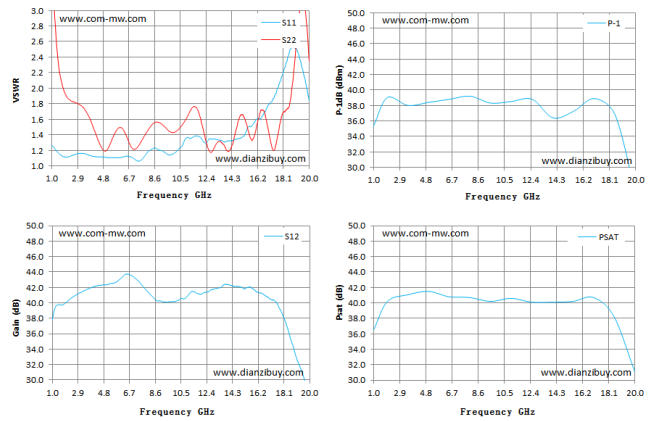
Reference picture



Configuration



Typical test curve



Note

Store in an environment with a humidity of less than 25%, pay attention to dust and anti-static measures, and consider amplifier heat dissipation during installation.