

## Main specifications

Parameters	Min	Typical	Max	Units
Frequency	30	~	1000	MHz
Gain		17		dB
Gain flatness			±1	dB
Noise figure			3	dB
VSWR			1.8	
P-1dB	6			dBm
OIP2	55			dBm
OIP3	35			dBm

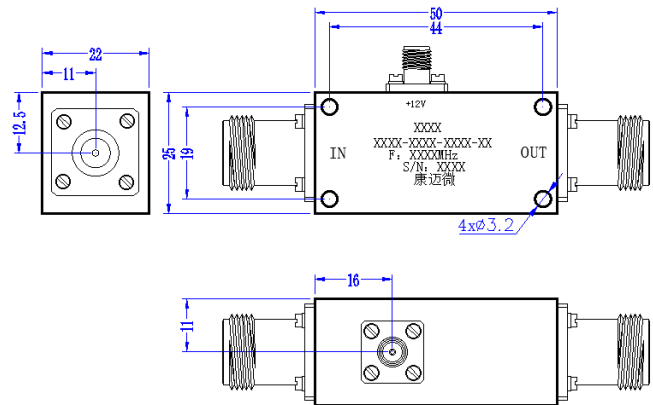
## Other parameters

Connector	N -K
Connector material	Stainless steel
Impedance	50Ω
Working voltage	+12V
Working current	200mA
Work Temp.	-40~+70°C Design assurance
Other	Feed port SMA-K

## Reference picture



## Configuration(mm)



## Note

Store in an environment with a humidity of less than 25% and pay attention to dust and static electricity prevention.