

## Product features

Low VSWR.

## Main specifications

Parameters	Min	Typical	Max	Units
Frequency	26.3	~	40	GHz
VSWR		1.1		

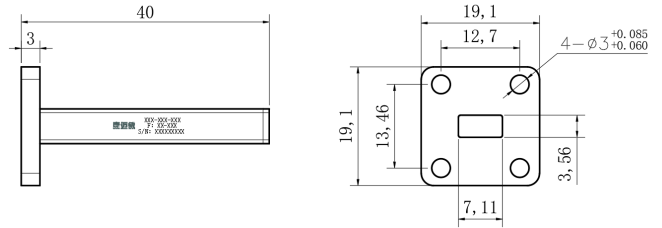
## Other parameters

Power	1W
Connector	Waveguide
Waveguide port	BJ320
Waveguide flange	FBP
Surface	Black
Product shell material	Copper
Work Temp.	-40~+85°C Design assurance

## Reference picture



## Configuration(mm)



## Note

Heat dissipation space is needed for installing the load, far away from the equipment with large heat output