

## Product features

Broadband, high-power.

## tech specifications

Parameters	Min	Typical	Max	Units
Frequency	700	~	800	MHz
IL			0.5	dB
Isolation	18			dB
VSWR			1.25	

## Environmental

Forward Power	100W
Direction	Clockwise
Connector	SMA-K
Impedance	50Ω
Work Temp.	-40~+85°C Design assurance

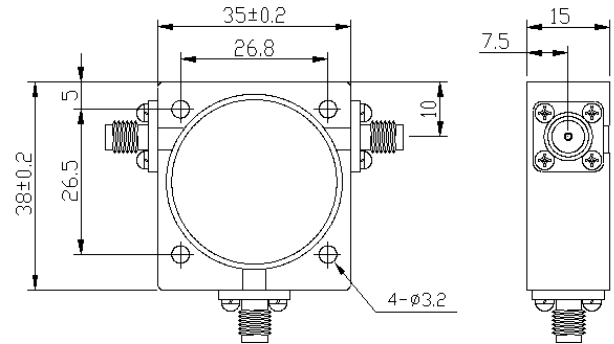
## Typical test data

Frequency(MHz)	S11 VSWR	S12 IL dB	S23 ISO dB	S12 VSWR
680	1.17	-0.31	-23.81	1.23
690	1.12	-0.28	-26.17	1.17
700	1.08	-0.26	-28.43	1.13
710	1.05	-0.25	-30.11	1.1
720	1.03	-0.25	-30.91	1.08
730	1.03	-0.24	-31.16	1.06
740	1.03	-0.24	-31.49	1.04
750	1.03	-0.25	-32.27	1.03
760	1.02	-0.25	-33.9	1.02
770	1.02	-0.25	-36.48	1.01
780	1.02	-0.26	-36.86	1.02
790	1.05	-0.27	-32.18	1.05
800	1.08	-0.29	-27.55	1.08
810	1.12	-0.32	-23.78	1.12
820	1.18	-0.36	-20.67	1.17

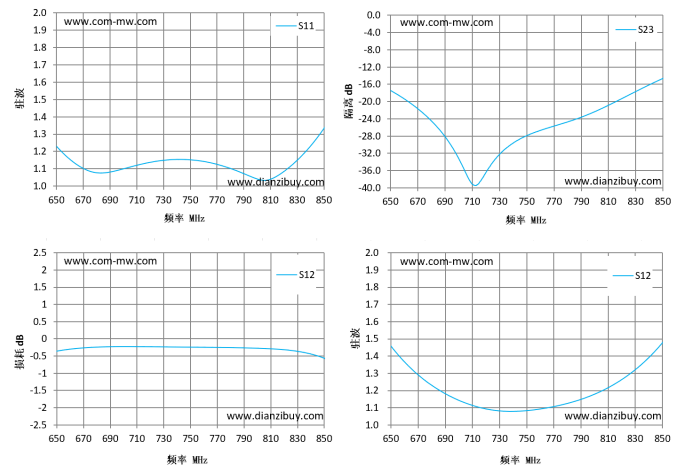
## Reference picture



## Configuration(mm)



## Typical test curve



## Note

The installation surface is flat, and the grounding is good. The isolator and circulator are unidirectional devices, so pay attention to the input and output ports. Isolators and circulator are magnetic devices, Please use stainless steel screws to fix them, It is forbidden to use steel screws, It is forbidden to install the devices on the steel shell. They are installed in the same assembly with other devices with permanent magnets or other isolators, Please keep the distance between the devices greater than 1cm, otherwise the electrical performance of the product may be affected. If the overall temperature of the product is greater than 100 °C, please negotiate with us before placing an order. Clean the surface of the product, do not immerse the product in cleaning solution for cleaning. The isolator and circulator should be stored separately for a long time, Please store them in a moisture-proof box with humidity less than 25%.

Note: The specifications and performance data contained in this data sheet are based on tests established by CMW.