

Product features

Broadband, small volume.

Main specifications

Parameters	Min	Typical	Max	Units
Frequency	100	~	6000	MHz
Attenuation range	0.25	~	31.75	dB
IL		3.2		dB
VSWR		1.6		
0.25dB Accuracy	0.15	0.25	0.35	dB
0.5dB Accuracy	0.4	0.5	0.6	dB
1dB Accuracy	0.9	1	1.1	dB
2dB Accuracy	1.9	2	2.1	dB
4dB Accuracy	3.7	4	4.2	dB
8dB Accuracy	7.3	8	8.5	dB
16dB Accuracy	14	16	17	dB
31.75dB Accuracy	29	31.75	33	dB

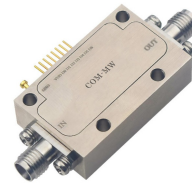
Other parameters

step	0.25dB
Power	0.2W
Impedance	50Ω
Connector	SMA-K detachable, Pin 0.38mm
Connector material	Stainless steel
Product shell material	Aluminium
Working voltage	+5V
Working current	10mA
Work Temp.	-40~+70°C Design assurance

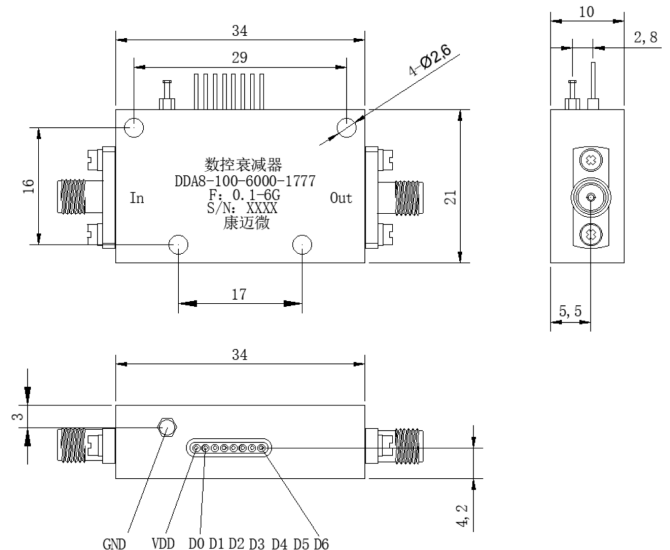
Truth table

Digital Control Input							Attenuation State (dB)
D6	D5	D4	D3	D2	D1	D0	
0	0	0	0	0	0	0	0(reference)
0	0	0	0	0	0	1	0.25
0	0	0	0	0	1	0	0.5
0	0	0	0	1	0	0	1
0	0	0	1	0	0	0	2
0	0	1	0	0	0	0	4
0	1	0	0	0	0	0	8
1	0	0	0	0	0	0	16
1	1	1	1	1	1	1	31.75

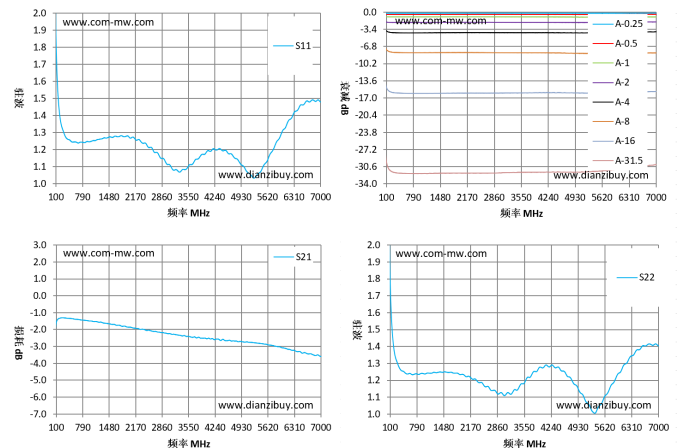
Reference picture



Configuration(mm)



Typical test curve



Note

1. Clean the surface of the product, do not soak the product in a cleaning solution; 2. This product belongs to electrostatic sensitive devices. Pay attention to anti-static measures during installation or storage; 3. If the overall temperature is greater than 125 °C, please consult with us before placing an order.